

Equity Assistance Center

Region II

Lander Center for Educational Research

Touro College

NJTESOL/NJBE Legislative Conference

May 20, 2009



Equity Assistance Centers

Civil Rights Act of 1964 – Title IV

**Resource to the Office of Civil Rights and the
Department of Justice**



Partnership

Lander Center for Educational Research at Touro College

Works closely with districts and schools in their efforts to promote student achievement, school leadership, team capacity building, teacher quality, school reform strategies, and the overall professional development of districts and school personnel.



Learning Innovations at WestEd (LI)

Provides professional development, research, and evaluation that bolster teacher quality and leadership, address needs of English Language Learners and students with disabilities, and improve learning in science, math, and other subjects.



EAC – II

Provides technical assistance to state departments of education and school districts, upon request, to address issues that affect student achievement and opportunity



Focus Areas

Race

Gender

National Origin

Priority Areas

- **Disproportionality**
- **Drop Out Prevention/Re-entry**
- **Teacher Quality**
- **English Language Learners (ELLs)**

EAC Staffing

Lander Center

LaMar P. Miller, PI

Velma L. Cobb, Director

Blanche Jiménez

Seong-shin Kim

Learning Innovations

Janet Phlegar, LI Liaison

Marla Pérez-Sellés

Lucy Ely Pagán

Susan Villani

Kristin Reedy

Equity Focus & Priority Areas

Service Delivery Teams

Race

Miller - LC
Cobb - LC
Jiménez - LC

Gender

Cobb - LC
Villani - LI

National Origin

Kim-LC
Pagén-LI
Pérez-Sellés-LI

ELLs

Kim - LC
Jiménez - LC
Pérez-Sellés - LI
Pagán - LI

Teacher Quality

Cobb - LC
Jiménez - LC
Villani-LI
Phlegar-LI

Dropout Prevention

Cobb-LC
Jiménez
Phlegar-LI
Pérez-Sellés-LI

Disproportionality

Miller - LC
Kim - LC
Pagén-LI
Reedy-LI

Our Services – At No Cost Upon Request:

EAC II provides to SEAs, LEAs & Schools –

- Technical Assistance
- Professional Development
- Training
- Consultation
- Curriculum Development
- Policy Development
- Dissemination of Equity Resources

School culture:
Professional attitudes,
Inclusive environment,
Collaboration, Clear focus
on students

Equity:
Expectation,
Relationship,
Rigor

Leadership:
Building Equity, Vision
& direction,
Accountability,
Sustaining innovation

Teaching and Learning:
Curriculum, Teaching
skills, Assessment,
Interventions

Authentic Task Approach To Service Delivery

The *Authentic Task Approach* (ATA) is a systematic approach to helping districts identify and/or clarify problems, establish goals, and accelerate continuous school improvement.

Building Capacity Using ATA

Two distinctive capacity building levels:

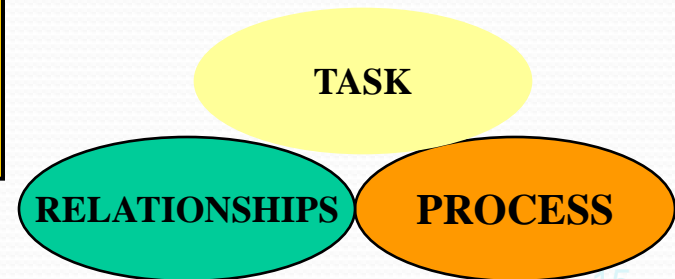
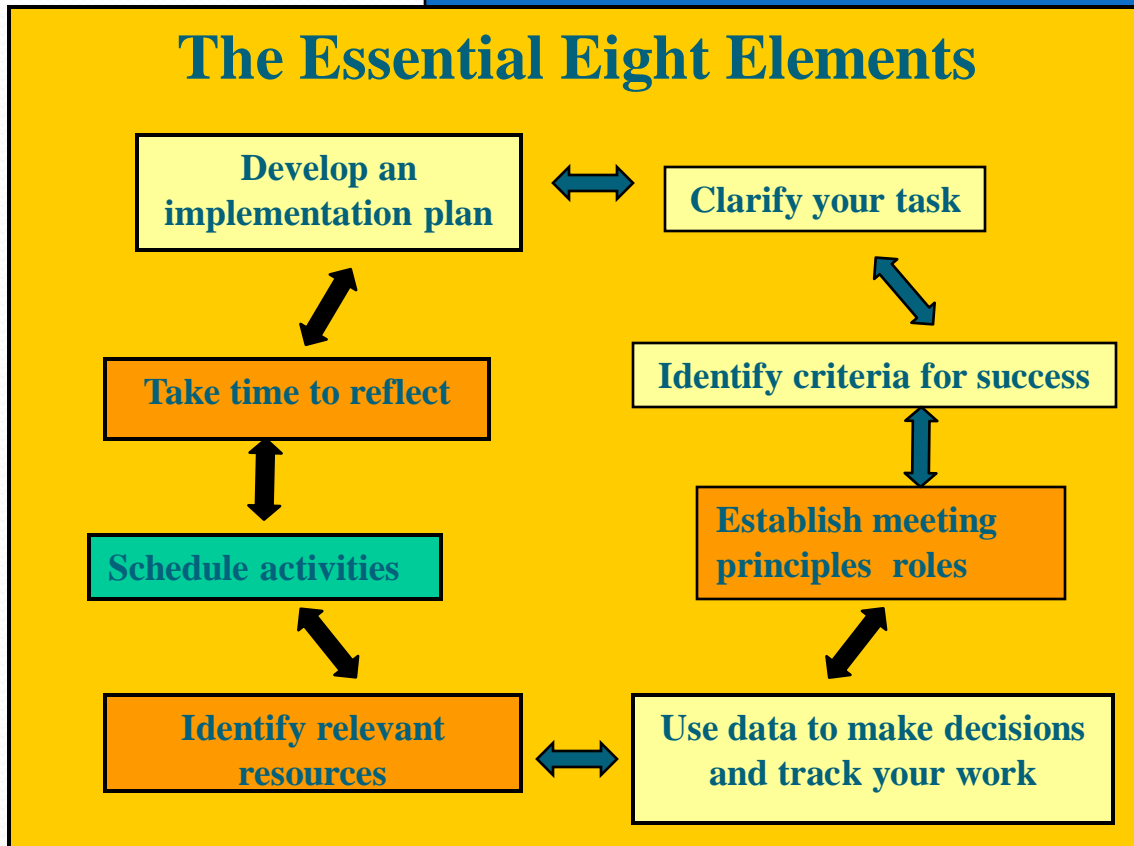
- a structured approach to addressing the specific issue or problem – usually the impetus behind the request to the EAC, and
- an expanded process that is intended to build the capacity of districts for sustained progress and systemic change.

The Authentic Task Approach

The Essential Backdrop

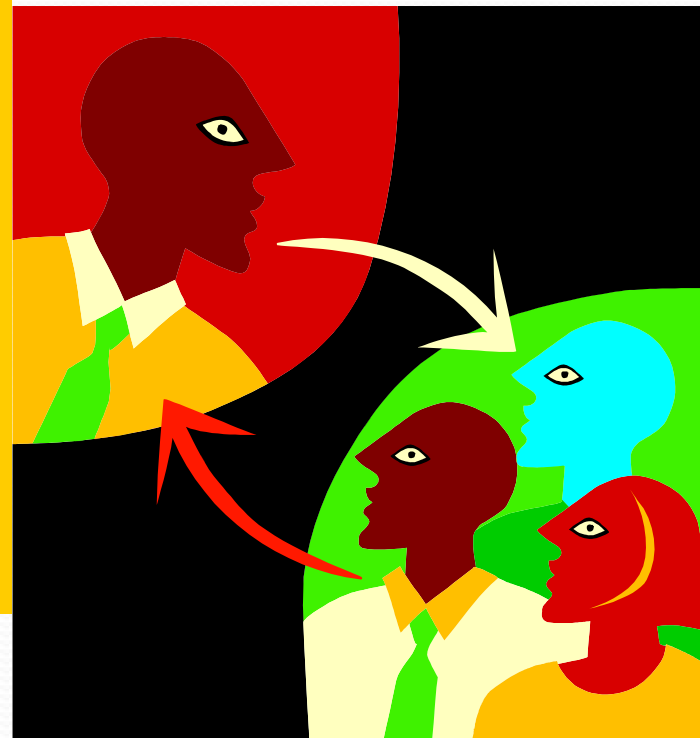
Articulate the Vision
Frame the Problem

The Essential Eight Elements



Problem versus Task

- A problem well framed is half the solution.
- We need to understand the problem before we can ensure we are working on the right task.



How we think about team work...

TASK

RESULTS

RELATIONSHIPS

PROCESS



For more information please visit our website:

www.touro.edu/eacregion2

or email Request for Services to:

eac.gse@touro.edu