

NJ Secondary Issues & New Language Learners

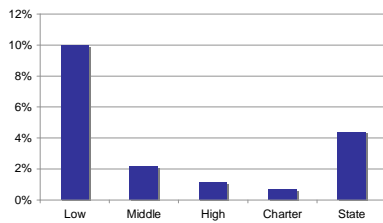
NJTESOL/NJBE Legislative Conference
 May 25, 2011
 Stan Karp
 Education Law Center
skarp@edlawcenter.org
 973-624-1815 x 28

ELL students in NJ

| | |
|---|---------|
| Number of language minority students | 283,425 |
| Number of LEP students | 65,080 |
| Total districts serving limited English proficient (LEP) students | 476 |
| Number of districts with bilingual education programs | 72 |

ELL students in NJ

% LEP BY DISTRICT WEALTH



ELL HSPA gap

| % HSPA PROFICIENT | Language Arts | | | Math | | |
|-------------------|---------------|-------------|--------------|-------------|-------------|--------------|
| | LEP | General Ed | All Students | LEP | General Ed | All Students |
| DFG_A | 26.5 | 77.8 | 62.6 | 24.7 | 56.3 | 44.7 |
| DFG_B | 34.8 | 91.3 | 80.4 | 31.6 | 72.4 | 61.9 |
| DFG_CD | 35.6 | 93.3 | 84.7 | 29.6 | 78.7 | 68.8 |
| DFG_DE | 34.9 | 95.6 | 89.3 | 33.8 | 82.3 | 74.2 |
| DFG_FG | 40.7 | 96.9 | 91.4 | 35.3 | 85.2 | 77.1 |
| DFG_GH | 45.0 | 98.0 | 93.4 | 47.3 | 90.1 | 83.2 |
| DFG_I | 55.1 | 99.1 | 96.2 | 54.7 | 94.9 | 89.2 |
| DFG_J | 59.5 | 99.3 | 97.6 | 86.5 | 97.9 | 94.7 |
| Charter | — | 78.1 | 74.2 | — | 48.4 | 44.8 |
| Abbott | 27.2 | 80.1 | 64.9 | 25.2 | 57.9 | 46.2 |
| Non-Abbott | 42.0 | 96.4 | 90.8 | 41.0 | 86.3 | 78.7 |
| Vocational | 70.7 | 95.8 | 90.0 | 77.3 | 85.0 | 77.6 |
| State | 34.8 | 94.3 | 87.1 | 33.3 | 82.7 | 74.1 |

NJ graduation rates

| | % | National Rank |
|------------------|------|---------------|
| All Students | 83.3 | #1 |
| White | 87.9 | #1 |
| African American | 66.7 | #3 |
| Hispanic | 66.1 | #1 |

Ed Week, Diplomas Count 2010

ELLs and AHSA

- Only about one-third of ELLs pass HSPA
- ELLs rely heavily on AHSA to graduate
- Last year AHSA changed significantly
- Accommodations/supports eroded
- 3,000 students denied diplomas

ELLs and AHSA

- No subgroup data for 2010 AHSA
- Outcomes/dropouts not reliably tracked
 - 70% of April AHSA students were from majority Black/Latino schools
- Evidence suggests disparate impact on ELLs

ELLs and AHSA

December 2010 AHSA results (with subgroup data)

- 1034 LEP students tested
 - 40% passed LA, 38% passed math
- Approx. 660 tested in other languages
 - 67% passed LA, 44% passed Math



ELLs and AHSA

- April AHSA results due 5/27
- New appeals process with “Educational Proficiency Plans” due 6/6
- Summer AHSA dates: June 13 - July 13



ELLs and state tests

- Coming testing changes
 - Algebra I
 - Bio exam
- “Transitional plan” in formation
- PARRC/Common Core



Pending issues

- Changes in graduation rates
- <http://www.state.nj.us/education/data/grate/>
- Possible impact on LEP
- Need for 5- and 6-year rates
- Other concerns: change in funding formula. LEP weight?



Campbell's Law

"The more any quantitative social indicator is used for social decision-making, the more subject it will be to corruption pressures and the more apt it will be to distort and corrupt the social processes it is intended to monitor."

- sociologist Donald Campbell



Resources

NJ Secondary List Serv

ELC Secondary Reform Project

skarp@edlawcenter.org 973-624-1815 x 28